

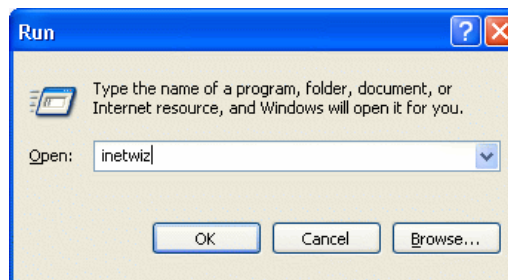


## Setting up your Dial-Up Connection

(For Windows XP Professional)

Welcome to Wightman Internet's Dial-Up service. This document will take you through a step by step process of how to successfully setup your account and make sure you will be surfing the internet in no time.

1. Begin by clicking on the *Start* button on the desktop, and then click *Run*. Next, type "inetwiz" beside *Open*. Click *Ok* to continue.



2. The first screen you will see is *Welcome to the Network Connection Wizard*. Click *Next* to continue.



3. Under *Network Connection Type*, select *Connect to the Internet*. Click on *Next>* to proceed.

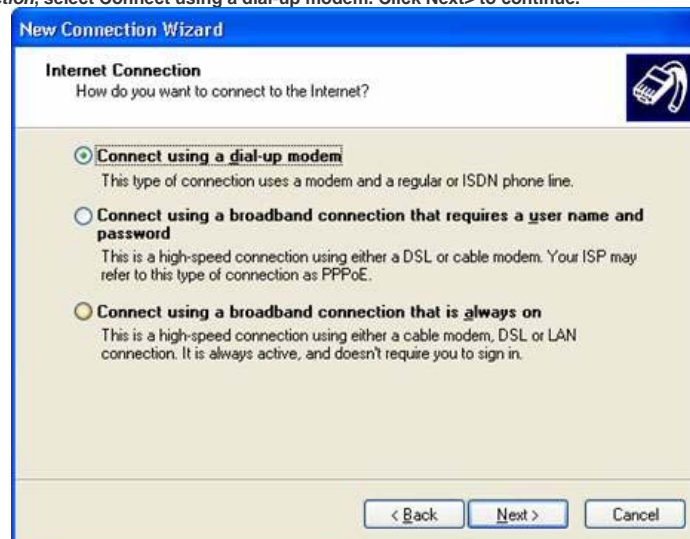




4. Under *Getting Ready*, select **Set up my connection manually**. Click **Next>** to continue.

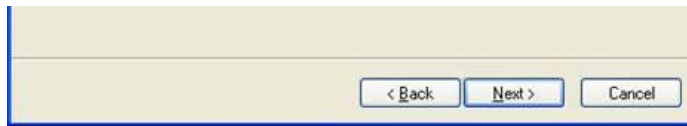


5. Under *Internet Connection*, select **Connect using a dial-up modem**. Click **Next>** to continue.



6. Under *Connection Name*, for the **ISP Name** enter **Wightman Internet**. This name identifies the connection you are configuring. Click on **Next>** to proceed.





7. Under Phone Number to Dial, enter The Number Given by Wightman Internet for your Location. (123-4567 is just an example) Click on Next> to proceed.

8. Under Internet Account Information, in the User name field: Enter your username(not your full E-mail address, but the portion to the left of the @ sign. e.g. for johnsmith@wightman.ca the username is johnsmith.)

9. Under Completing the New Connection Wizard, you may choose to add a shortcut to your connection on the desktop by selecting "Add a shortcut to this connection to my desktop." Click on Finish to complete this step.

10. Under Internet Connection, select Connect using a dial-up modem. Click Next> to continue.