



Setting up your Dial-Up Connection

(Windows ME)

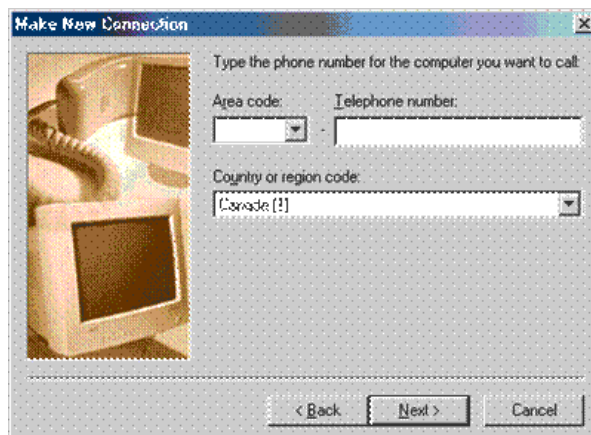
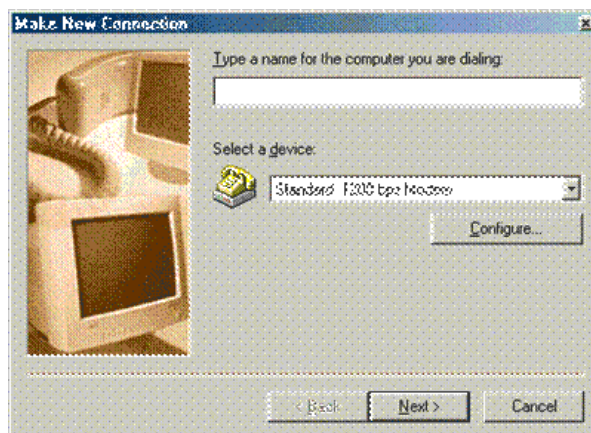
Welcome to Wightman Internet's Dial-Up service. This document will take you through a step by step process of how to successfully setup your account and make sure you will be surfing the internet in no time.

1. Start by double clicking on the My Computer icon on your desktop (usually in the top left corner of the screen), double click on the Control Panel, double click on the Dial-Up Networking folder, and double click on the Make New Connection icon .

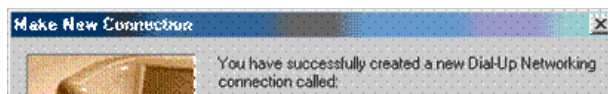


2. You will be asked to type a name for the computer you're dialing. Enter a descriptive name, such as Wightman Internet to label the connection to our service.

Do not change your modem settings at this time, since they have presumably been configured correctly. Any modems installed will appear in the list under the Select a device field. Select the modem you want to use. Click on "Next" to proceed .

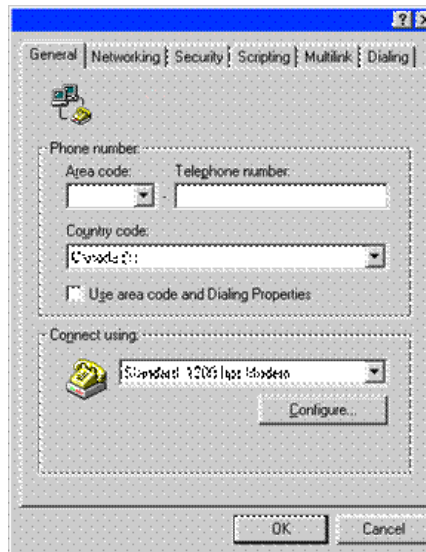


3. Windows will inform you that you've created your new Dial-Up Networking (DUN) connection. Now, click Finish to finish.

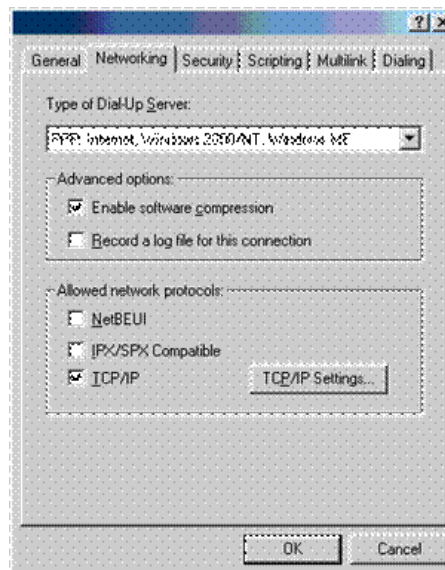




4. A new icon will be created in your Dial-Up Networking folder, with the name that you gave it in step 2. Highlight the icon by clicking on it once. Click once with the right mouse button to display a pop-up menu. From this menu, select Properties to go to the next step. A new window will appear listing the phone number, connection method and modem to use while dialing. Click on the Server Types tab to continue with the configuration.



5. The Type of Dial-Up Server field should already read PPP: Internet, Windows NT Server, Windows 98. If it doesn't, use the down arrow on the right hand side of the field to select it. Under Advanced options, check Enable software compression. All other boxes should be left empty.



6. For Allowed network protocols, you must have a check mark beside TCP/IP. The NetBEUI and IPX/SPX boxes should not be checked.

Click the TCP/IP Settings... button to go on

7. Edit the fields on the TCP/IP Settings window as follows:
 - a. Put a dot in the radio button beside Server assigned IP address. The corresponding Specify an IP address button will be empty and the IP address fields will be greyed out.

- b. Put check marks in the boxes for Use IP header compression and Use default gateway on remote network.
- c. Put a dot in the radio button beside Specify name server addresses. Enter the DNS numbers (refer to the TCP/IP Settings picture) manually.

When you are finished, close this window by clicking on OK, and close any remaining DUN windows also by selecting OK.

TCP/IP Settings

Server assigned IP address

Specify an IP address

IP address: 0 . 0 . 0 . 0

Server assigned name server addresses

Specify name server addresses

Primary DNS: . . .

Secondary DNS: . . .

Primary WINS: 0 . 0 . 0 . 0

Secondary WINS: 0 . 0 . 0 . 0

Use IP header compression

Use default gateway on remote network

OK Cancel

8. To connect to the Internet, double click on the U of M DUN icon you created.

The Connect To window requires a User name and Password.

For security reasons, it is recommended that you do not put a check mark in the Save password box.

The User name is your userid (not your full E-mail address, but the portion to the left of the @ sign). For example, if your email address is joesmith@wightman.ca, your userid is joesmith.

To start your connection to the Internet, click the Connect button to begin dialing.

Connect To

User name: []

Password: []

Save password

Connect automatically

Phone number: []

Dialing from: New York, NY [Dial Properties...]

Connect Properties Cancel

9. Put check marks in the boxes for Use IP header compression and Use default gateway on remote network.
10. Put a dot in the radio button beside Specify name server addresses. Enter the DNS numbers (refer to the TCP/IP Settings picture) manually.

When you are finished, close this window by clicking on OK, and close any remaining DUN windows also by selecting OK .

TCP/IP Settings

Server assigned IP address

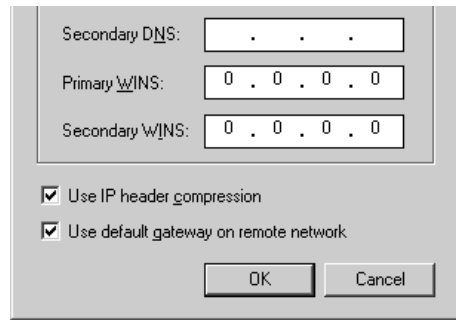
Specify an IP address

IP address: 0 . 0 . 0 . 0

Server assigned name server addresses

Specify name server addresses

Primary DNS: . . .



Secondary DNS: . . .

Primary WINS: 0 . 0 . 0 . 0

Secondary WINS: 0 . 0 . 0 . 0

Use IP header compression

Use default gateway on remote network

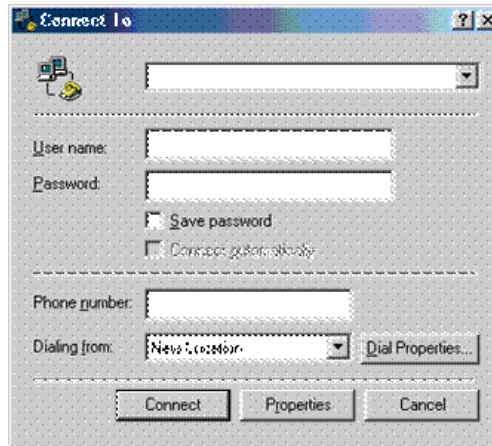
OK Cancel

8. To connect to the Internet, double click on the U of M DUN icon you created.

The Connect To window requires a User name and Password. For security reasons, it is recommended that you do not put a check mark in the Save password box.

The User name is your userid (not your full E-mail address, but the portion to the left of the @ sign). For example, if your email address is joesmith@wightman.ca, your userid is joesmith.

To start your connection to the Internet, click the Connect button to begin dialing .



Connect To

[Icon] [Dropdown]

User name: [Text Box]

Password: [Text Box]

Save password

Connect automatically

Phone number: [Text Box]

Dialing from: [Dropdown] Dial Properties...

Connect Properties Cancel