

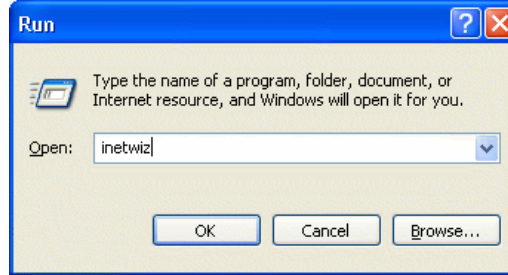


## Setting up your Dial-Up Connection

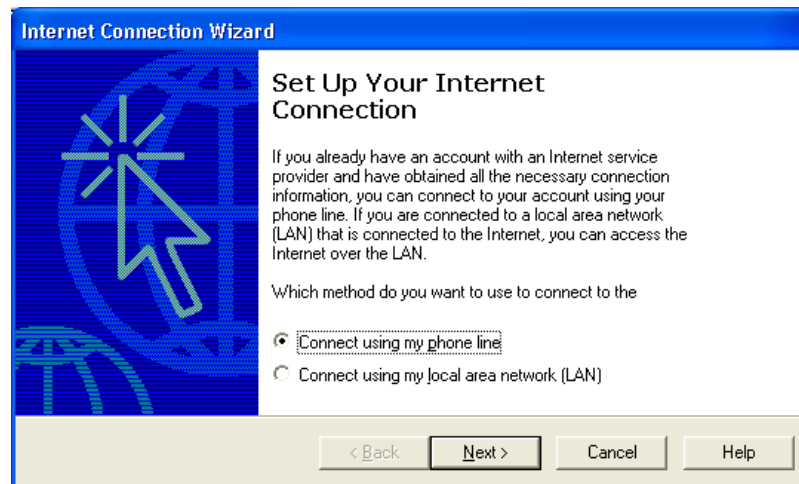
(For Windows XP Home)

Welcome to Wightman Internets Dial-Up service. This document will take you through a step by step process of how to successfully setup your account and make sure you will be surfing the internet in no time.

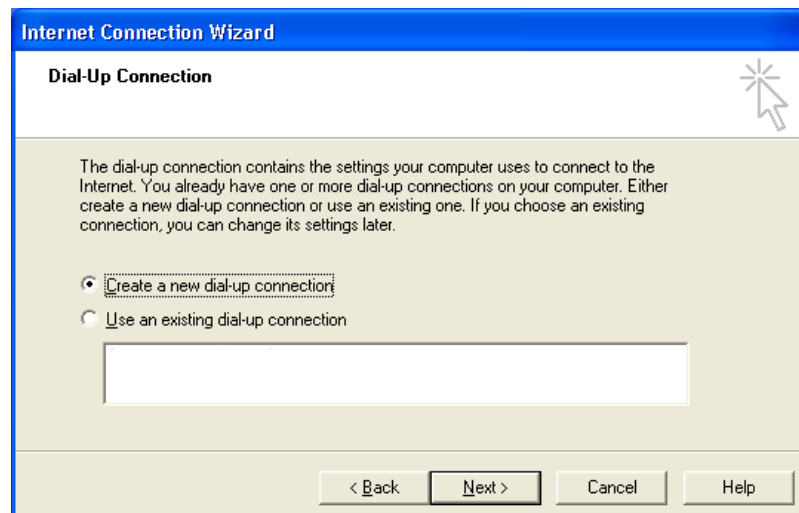
1. Begin by clicking on the **Start** button on the desktop, and then click **Run**. Next, type "inetwiz" beside **Open**. Click **Ok** to continue.



2. The first screen you will see is Internet Connection Wizard. Choose **Connect using my phone line** and click **Next>** to continue.



3. Choose **Create a new dial-up connection**. Click on **Next>** to proceed.



4. Under **Telephone number** type the provided number. Click **Next>** to continue.

**Internet Connection Wizard**

**Step 1 of 3: Internet Account Connection Information**

Type the phone number you dial to connect to your ISP.

Area code: Telephone number:

Country/region name and code:

Use area code and dialing rules

To configure connection properties, click Advanced.  
(Most ISPs do not require advanced settings.)

Advanced...

< Back Next > Cancel Help

5. Under Internet Account Information, in the User name field:
  - a. Type in your username (not your full E-mail address, but the portion to the left of the @ sign).
  - b. Type in your password if you wish for the PC to remember it for logging on.
  - c. Click Next> to proceed

**Internet Connection Wizard**

**Step 2 of 3: Internet Account Logon Information**

Type the user name and password you use to log on to your ISP. Your user name may also be referred to as your Member ID or User ID. If you do not know this information, contact your ISP.

User name: userid

Password:

< Back Next > Cancel Help

6. Under Name, for the ISP Name enter Wightman Internet. This name identifies the connection you are configuring. Click Next> to proceed

**Internet Connection Wizard**

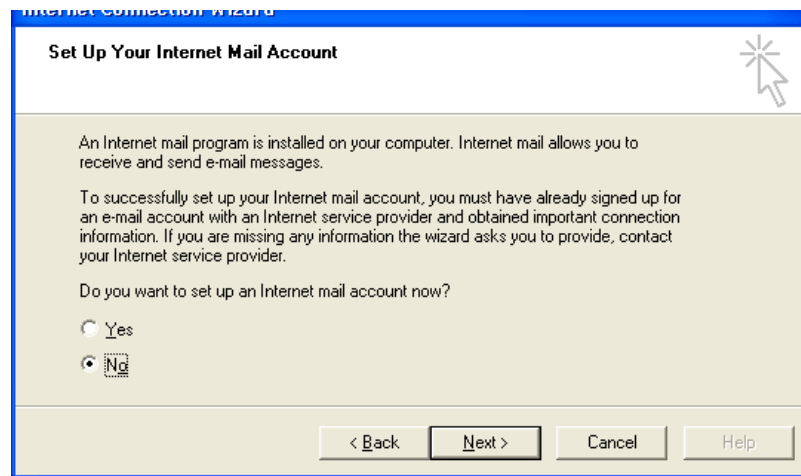
**Step 3 of 3: Configuring Your Computer**

Type the name you want to use for this connection. This can be the name of your ISP or any name you want to use.

Name:

< Back Next > Cancel Help

7. Choose No, if you do not wish to configure an email account at this time. Click on Next> to proceed.



8. You have now completed the Internet Connection Wizard. You can dial into Wightman Internet by going to Start, then Connect to and clicking on Wightman Internet. Click Finish to exit the wizard.

